

FOURCHETTES de PERÇAGE AERONAUTIQUES

Les fourchettes sont des gabarits de perçage généralement utilisés pour la mise en place des écrous à river (anchor nuts).

Il existe de multiples formes correspondant aux différents écrous à river.



Les écrous à river correspondent généralement à des Normes, soit américaines en pouces (MS, NAS), soit européennes en mm (ASN, EN).

Les fourchettes permettent de réaliser des perçages précis par rapport à un premier alésage (un pilote positionne correctement la fourchette par rapport à l'alésage existant).

Fourchettes standard US

Les fourchettes les plus utilisées sont des fourchettes fabriquées en grandes séries aux USA. La poignée est flexible et les têtes sont adaptées à l'écrou à river.

Elles se présentent sous la forme suivante :



MAJ : 02-18
Vérif. : N.P.L
Appr. : C . P

Distribution OPINDUS

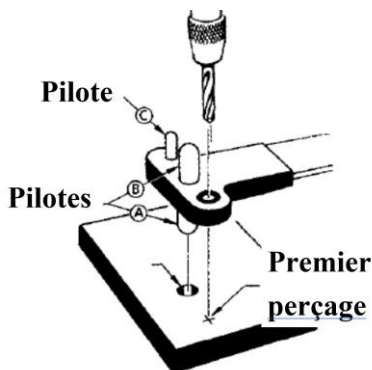


Matériel conforme à la législation européenne

OPINDUS : 1, Rue Maurice Audibert 69800 SAINT PRIEST Tél : 04.78.21.73.14 - Fax : 04.78.21.73.01

Mode opératoire :

L'alésage pour le premier rivet est effectué en plaçant la fourchette du côté où il y a un seul pilote ; l'alésage pour le deuxième rivet est effectué après retournement de la fourchette et utilisation des deux pilotes.



Les différentes formes et dimensions sont reprises dans les tableaux des fourchettes standard US présentées dans les pages suivantes.

En fin de présentation d'autres tableaux donnent la correspondance entre les fourchettes et les références des écrous à river ; ils servent de référence, mais il est nécessaire de vérifier les valeurs avant de choisir la fourchette (exemple : pour la référence MS21048-3 le tableau conseille la fourchette 518C, mais l'utilisateur a préféré la fourchette 518B en fonction de ses plans d'usinage).

Enfin pour faciliter la sélection, et du fait que les tableaux donnent des valeurs en pouces avec des décimales, il est rajouté un tableau de correspondances entre les fractions de pouce ($5/32''$ par exemple, les valeurs avec les décimales, et la correspondance en mm).

Normes européennes :

Ces fourchettes sont parfois utilisées pour les écrous suivant les Normes européennes du fait que les rivets utilisés sont généralement en cotes pouce.

Dans ce cas il est nécessaire de bien vérifier la concordance des entraxes.

Parallèlement OPINDUS réalise toutes fourchettes spéciales, généralement en cotes métriques, pour répondre aux besoins des utilisateurs.



MAJ : 02-18
Vérif. : N.P.L
Appr. : C . P

Distribution OPINDUS



Matériel conforme à la législation européenne

OPINDUS : 1, Rue Maurice Audibert 69800 SAINT PRIEST Tél : 04.78.21.73.14 - Fax : 04.78.21.73.01

Fourchettes spécifiques fabrication OPINDUS

Ces fourchettes sont réalisées suivant les besoins des utilisateurs, et bien évidemment conformes aux dimensions souhaitées.

La réalisation standard comprend une poignée (droite ou pliée) supportant un pilote et deux canons de perçage (servant de guide pour effectuer correctement les deux alésages à l'emplacement des rivets).



OPINDUS répond aux demandes des utilisateurs; dans l'exemple ci-dessous le pilote est amovible, et existe en plusieurs dimensions.



MAJ : 02-18
Vérif. : N.P.L
Appr. : C . P

Distribution OPINDUS

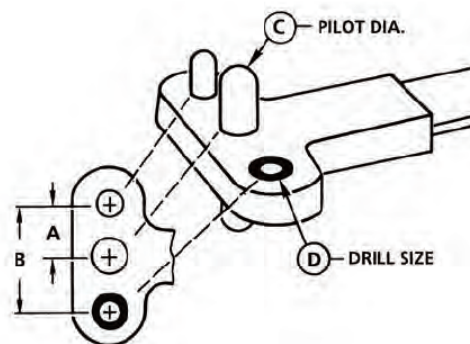


Matériel conforme à la législation européenne

OPINDUS : 1, Rue Maurice Audibert 69800 SAINT PRIEST Tél : 04.78.21.73.14 - Fax : 04.78.21.73.01

FOURCHETTES STANDARD US

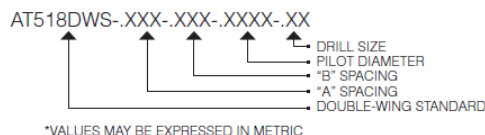
Liaison souple entre la poignée et la tête
 Tête en acier traité



TWO LUG — DOUBLE WING STANDARD (DWS)

Part Number	Type	"A" Spacing	"B" Spacing	"C" Pilot Diameter	"D" Drill Size
AT1518A	DWS	.344	.688	.139	#40
AT1518B	DWS	.344	.688	.164	#40
AT1518KK	DWS	.344	.688	.165	#40
AT1518KC	DWS	.344	.688	.168	#40
AT1518KL	DWS	.344	.688	.188	#40
AT1518C	DWS	.344	.688	.191	#40
AT1518KD	DWS	.344	.688	.192	#40
AT1518KT	DWS	.344	.688	.227	#40
AT1518KU	DWS	.344	.688	.256	#40
AT1518BF	DWS	.344	.688	.281	#40
AT1518HL	DWS	.344	.688	.290	#40
AT1518GM	DWS	.344	.688	.312	#40
AT1518HE	DWS	.3125	.625	.187	#40
AT1518HM	DWS	.3125	.625	.218	#40
AT1518HO	DWS	.375	.750	.248	#40
AT1518HP	DWS	.375	.750	.281	#40
AT1518HH	DWS	.375	.750	.372	#40
AT1518M	DWS	.375	.750	.438	#40
AT1518HN	DWS	.375	.750	.467	#40
AT1518GT	DWS	.4375	.875	.373	#40
AT1518HX	DWS	.450	.900	.372	#40
AT1518D	DWS	.500	1.000	.248	#40
AT1518KE	DWS	.500	1.000	.256	#40
AT1518GR	DWS	.500	1.000	.271	#40
AT1518GS	DWS	.500	1.000	.296	#40
AT1518KV	DWS	.500	1.000	.311	#40
AT1518DF	DWS	.500	1.000	.343	#40
AT1518GG	DWS	.500	1.000	.656	#40
AT1518GL	DWS	.344	.688	.218	#40
AT1518KA	DWS	.344	.688	.119	#40
AT1518KB	DWS	.344	.688	.143	#40
AT1518HF	DWS	.500	1.000	.191	#30
AT1518HJ	DWS	.500	1.000	.248	#30
AT1518KN	DWS	.500	1.000	.311	#30
AT1518E	DWS	.500	1.000	.312	#30
AT1518KF	DWS	.500	1.000	.315	#30
AT1518F	DWS	.500	1.000	.372	#30
AT1518KG	DWS	.500	1.000	.373	#30
AT1518GD	DWS	.500	1.000	.375	#30
AT1518HG	DWS	.500	1.000	.389	#30
AT1518HD	DWS	.500	1.000	.500	#30

» ORDER SPECIAL TWO-LUG, DOUBLE-WING STANDARD, DRILL JIG'S AS FOLLOWS:



Part Number	Type	"A" Spacing	"B" Spacing	"C" Pilot Diameter	"D" Drill Size
AT1518HS	DWS	.500	1.000	.561	#30
AT1518GB	DWS	.500	1.000	.593	#30
AT1518HT	DWS	.500	1.000	.624	#30
AT1518N	DWS	.500	1.000	.688	#30
AT1518GA	DWS	.500	1.000	.702	#30
AT1518GP	DWS	.562	1.124	.438	#30
AT1518HW	DWS	.592	1.184	.811	#30
AT1518GN	DWS	.595	1.190	.592	#30
AT1518KH	DWS	.625	1.250	.435	#30
AT1518HB	DWS	.687	1.375	.191	#30
AT1518HC	DWS	.687	1.375	.405	#30
AT1518KJ	DWS	.687	1.375	.498	#30
AT1518GE	DWS	.687	1.375	.500	#30
AT1518HK	DWS	.687	1.375	.656	#30
AT1518GC	DWS	.687	1.375	.718	#30
AT1518HA	DWS	.687	1.375	.749	#30
AT1518P	DWS	.687	1.375	.811	#30
AT1518HY	DWS	.700	1.400	.850	#30
AT1518GK	DWS	.500	1.000	.343	#30
AT1518KP	DWS	.500	1.000	.457	#30
AT1518GF	DWS	.375	.750	.437	#40
AT1518GH	DWS	.375	.750	.397	#40
AT1518GJ	DWS	.500	1.000	.281	#40
AT1518SP1171	DWS	.562	1.124	.191	#40
AT1518NASAA5	DWS	.359	.718	.312	#30
AT1518NASAA6	DWS	.414	.828	.372	#30

MAJ : 02-18
 Vérif. : N.P.L
 Appr. : C . P

Distribution OPINDUS



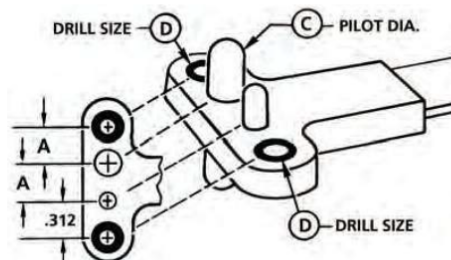
Matériel conforme à la législation européenne

OPINDUS : 1, Rue Maurice Audibert 69800 SAINT PRIEST Tél : 04.78.21.73.14 - Fax : 04.78.21.73.01

FOURCHETTES STANDARD US
 Liaison souple entre la poignée et la tête
 Tête en acier traité

ONE LUG — SINGLE WING STANDARD (SWS)

Part Number	Type	"A" Spacing	"C" Pilot Diameter	"D" Drill Size
ATI518G	SWS	.344	.139	#40
ATI518H	SWS	.344	.164	#40
ATI518RL	SWS	.344	.165	#40
ATI518RC	SWS	.344	.168	#40
ATI518RM	SWS	.344	.188	#40
ATI518J	SWS	.344	.191	#40
ATI518RD	SWS	.344	.192	#40
ATI518L	SWS	.344	.213	#40
ATI518RU	SWS	.344	.227	#40
ATI518K	SWS	.344	.248	#40
ATI518RE	SWS	.344	.256	#40
ATI518LF	SWS	.344	.281	#40
ATI518RW	SWS	.344	.311	#40
ATI518RO	SWS	.500	.248	#40
ATI518RF	SWS	.500	.256	#40
ATI518RX	SWS	.500	.311	#40
ATI518YF	SWS	.500	.343	#40
ATI518RP	SWS	.500	.311	#30
ATI518RG	SWS	.500	.315	#30
ATI518FH	SWS	.500	.372	#30
ATI518RH	SWS	.500	.373	#30
ATI518RJ	SWS	.562	.435	#30
ATI518RB	SWS	.344	.143	#40
ATI518NASDA5	SWS	.359	.312	#30
ATI518NASDA6	SWS	.414	.372	#30

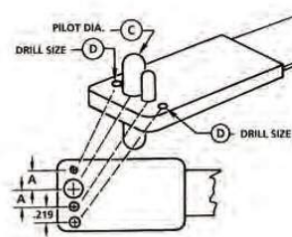


» ORDER SPECIAL ONE-LUG, SINGLE-WING STANDARD, DRILL JIG'S AS FOLLOWS:

ATI518SWS-.XXX-.XXXX-.XX
 ↑ ↑ ↑ ↑
 DRILL SIZE PILOT DIAMETER "A" SPACING SINGLE-WING STANDARD
 *VALUES MAY BE EXPRESSED IN METRIC

ONE LUG — SINGLE WING MINIATURE (SWM)

Part Number	Type	"A" Spacing	"C" Pilot Diameter	"D" Drill Size
ATI518NASBA2	SWM	.125	.086	#51
ATI518NASBA3	SWM	.133	.099	#51
ATI518NASBA4	SWM	.148	.112	#51
ATI518NASBA6	SWM	.171	.139	#51
ATI518PA	SWM	.203	.112	#40
ATI518JA	SWM	.203	.140	#40
ATI518PB	SWM	.218	.139	#40
ATI518JB	SWM	.218	.166	#40
ATI518PC	SWM	.234	.164	#40
ATI518JC	SWM	.234	.193	#40
ATI518PD	SWM	.250	.191	#40
ATI518JD	SWM	.250	.218	#40
ATI518PE	SWM	.281	.248	#40
ATI518JE	SWM	.281	.281	#40
ATI518PF	SWM	.250	.188	#40



» ORDER SPECIAL ONE-LUG, SINGLE-WING MINIATURE, DRILL JIG'S AS FOLLOWS:

ATI518SWM-.XXX-.XXXX-.XX
 ↑ ↑ ↑ ↑
 DRILL SIZE PILOT DIAMETER "A" SPACING SINGLE-WING MINIATURE
 *VALUES MAY BE EXPRESSED IN METRIC

MAJ : 02-18
 Vérif. : N.P.L
 Appr. : C . P

Distribution OPINDUS



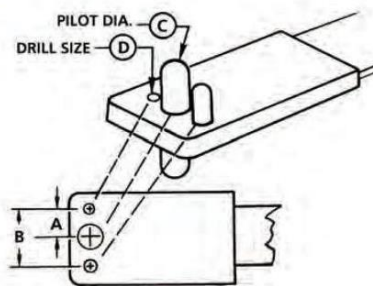
Matériel conforme à la législation européenne

OPINDUS : 1, Rue Maurice Audibert 69800 SAINT PRIEST Tél : 04.78.21.73.14 - Fax : 04.78.21.73.01

FOURCHETTES STANDARD US
 Liaison souple entre la poignée et la tête
 Tête en acier traité

TWO LUG — DOUBLE WING MINIATURE (DWM)

Part Number	Type	"A" Spacing	"B" Spacing	"C" Pilot Diameter	"D" Drill Size
AT1518NASAA2	DWM	.125	.250	.086	#51
AT1518NASAA3	DWM	.133	.265	.099	#51
AT1518NASAA4	DWM	.148	.296	.112	#51
AT1518NSAA06	DWM	.172	.343	.139	#51
AT1518NA	DWM	.203	.406	.112	#40
AT1518AA	DWM	.203	.406	.140	#40
AT1518BA	DWM	.203	.406	.180	#40
AT1518NB	DWM	.218	.436	.139	#40
AT1518AB	DWM	.219	.437	.166	#40
AT1518BB	DWM	.219	.437	.2055	#40
AT1518NC	DWM	.234	.468	.164	#40
AT1518NG	DWM	.234	.468	.1925	#40
AT1518AC	DWM	.234	.468	.193	#40
AT1518NH	DWM	.234	.468	.227	#40
AT1518BC	DWM	.234	.468	.234	#40
AT1518ND	DWM	.250	.500	.191	#40
AT1518AD	DWM	.250	.500	.218	#40
AT1518BD	DWM	.250	.500	.257	#40
AT1518NE	DWM	.281	.562	.248	#40
AT1518AE	DWM	.281	.562	.281	#40
AT1518BE	DWM	.281	.562	.323	#40
AT1518NF	DWM	.313	.625	.312	#30
AT1518AF	DWM	.313	.625	.343	#30
AT1518ZX	DWM	.539	1.080	.248	#40
AT1518SP1016	DWM	.295	.590	.217	#40
AT1518BG	DWM	.359	.718	.373	#30
AT1518NJ	DWM	.250	.500	.1875	#40

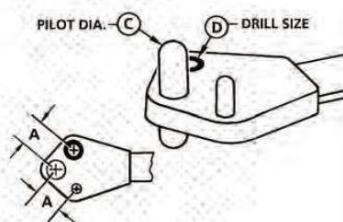


» ORDER SPECIAL TWO-LUG, DOUBLE-WING MINIATURE, DRILL JIG'S AS FOLLOWS:



CORNER WING STANDARD (CWS)

Part Number	Type	"A" Spacing	"C" Pilot Diameter	"D" Drill Size
AT1518R	CWS	.344	.139	#40
AT1518S	CWS	.344	.164	#40
AT1518MK	CWS	.344	.1645	#40
AT1518MC	CWS	.344	.1675	#40
AT1518ML	CWS	.344	.1875	#40
AT1518T	CWS	.344	.191	#40
AT1518MD	CWS	.344	.192	#40
AT1518MT	CWS	.344	.2265	#40
AT1518MU	CWS	.500	.2555	#40
AT1518U	CWS	.500	.248	#40
AT1518ME	CWS	.500	.2555	#40
AT1518MV	CWS	.500	.3105	#40
AT1518MN	CWS	.500	.311	#30
AT1518V	CWS	.500	.312	#30
AT1518MF	CWS	.500	.3145	#30
AT1518W	CWS	.500	.372	#30
AT1518MP	CWS	.500	.373	#30
AT1518MR	CWS	.562	.435	#30
AT1518X	CWS	.562	.4375	#30
AT1518MB	CWS	.344	.1425	#40
AT1518NASC45	CWS	.358	.312	#30



» ORDER SPECIAL CORNER-WING STANDARD DRILL JIG'S AS FOLLOWS:



MAJ : 02-18
 Vérif. : N.P.L
 Appr. : C . P

Distribution OPINDUS



Matériel conforme à la législation européenne

OPINDUS : 1, Rue Maurice Audibert 69800 SAINT PRIEST Tél : 04.78.21.73.14 - Fax : 04.78.21.73.01

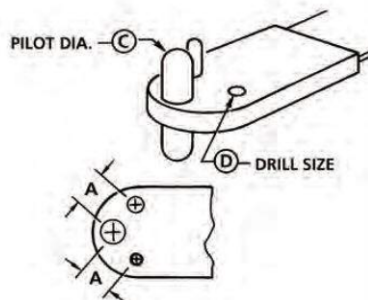
FOURCHETTES STANDARD US
 Liaison souple entre la poignée et la tête
 Tête en acier traité



AT1518SD

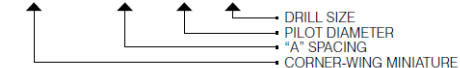
CORNER WING MINIATURE (CWM)

Part Number	Type	"A" Spacing	"C" Pilot Diameter	"D" Drill Size
AT1518NSCA02	CWM	.125	.086	#51
AT1518NSCA03	CWM	.138	.099	#51
AT1518NSCA04	CWM	.148	.112	#51
AT1518NSCA06	CWM	.172	.139	#51
AT1518SA	CWM	.203	.112	#40
AT1518UA	CWM	.203	.140	#40
AT1518SB	CWM	.218	.139	#40
AT1518UB	CWM	.218	.166	#40
AT1518SC	CWM	.234	.164	#40
AT1518UC	CWM	.234	.193	#40
AT1518SD	CWM	.250	.191	#40
AT1518UD	CWM	.250	.218	#40
AT1518SE	CWM	.281	.248	#40
AT1518UE	CWM	.281	.281	#40
AT1518SF	CWM	.312	.312	#30
AT1518UF	CWM	.312	.343	#30
AT1518SJ	CWM	.250	.1875	#40



» ORDER SPECIAL CORNER-WING MINIATURE DRILL JIG'S AS FOLLOWS"

AT518CWM-.XXXX-.XXXX-.XX



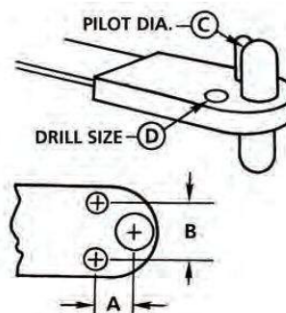
*VALUES MAY BE EXPRESSED IN METRIC



AT1518TA

MINIATURE ANCHORNUIT (SLM)

Part Number	Type	"A" Spacing	"B" Spacing	"C" Pilot Diameter	"D" Drill Size
AT1518NSDA08	SLM	.234	.219	.164	#40
AT1518TA	SLM	.250	.219	.191	#40
AT1518TB	SLM	.281	.219	.248	#40
AT1518TC	SLM	.312	.250	.312	#30
AT1518TD	SLM	.359	.269	.3125	#30
AT1518TE	SLM	.250	.219	.1875	#40
AT1518NASDA5	SLM	.359	.269	.312	#30
AT1518NASDA6	SLM	.414	.269	.372	#30



» ORDER SPECIAL MINIATURE ANCHORNUIT DRILL JIG'S AS FOLLOWS:

AT518SLM-.XXXX-.XXXX-.XXXX-.XX



*VALUES MAY BE EXPRESSED IN METRIC

MAJ : 02-18
 Vérif. : N.P.L
 Appr. : C . P

Distribution OPINDUS



Matériel conforme à la législation européenne

OPINDUS : 1, Rue Maurice Audibert 69800 SAINT PRIEST Tél : 04.78.21.73.14 - Fax : 04.78.21.73.01

CORRESPONDANCE FOURCHETTES - NORMES US

SINGLE WING

Nutplate Spec	Style	Part Number
MS21051-06	Single Wing	ATI518G
MS21051-08	Single Wing	ATI518H
MS21051-3	Single Wing	ATI518J
MS21051-4	Single Wing	ATI518K
MS21051-5	Single Wing	ATI518RP
MS21051-6	Single Wing	ATI518RH
MS21052-06	Single Wing	ATI518G
MS21052-08	Single Wing	ATI518H
MS21052-3	Single Wing	ATI518J
MS21052-4	Single Wing	ATI518K
MS21052-5	Single Wing	ATI518RP
MS21052-6	Single Wing	ATI518RH
MS21053-08	Single Wing	ATI518H
MS21053-3	Single Wing	ATI518J
MS21053-4	Single Wing	ATI518RO
MS21053-5	Single Wing	ATI518RP
MS21054-08	Single Wing	ATI518H
MS21054-3	Single Wing	ATI518J
MS21054-4	Single Wing	ATI518RO
MS21054-5	Single Wing	ATI518RP
MS21061-06	Single Wing	ATI518G
MS21061-08	Single Wing	ATI518H
MS21061-3	Single Wing	ATI518J
MS21061-4	Single Wing	ATI518RO
MS21061-5	Single Wing	ATI518RP
MS21061-6	Single Wing	ATI518RH
MS21062-06	Single Wing	ATI518G
MS21062-08	Single Wing	ATI518H
MS21062-3	Single Wing	ATI518J
MS21062-4	Single Wing	ATI518RO
MS21062-5	Single Wing	ATI518RP
MS21062-6	Single Wing	ATI518RH
MS21071-04	Single Wing	ATI518PA
MS21071-06	Single Wing	ATI518PB
MS21071-08	Single Wing	ATI518PC
MS21071-3	Single Wing	ATI518PD
MS21071-4	Single Wing	ATI518PE
MS21072-04	Single Wing	ATI518PA
MS21072-06	Single Wing	ATI518PB
MS21072-08	Single Wing	ATI518PC
MS21072-3	Single Wing	ATI518PD
MS21072-4	Single Wing	ATI518PE
NAS1067-08	Single Wing	ATI518PC
NAS1067-3	Single Wing	ATI518PD
NAS1067-4	Single Wing	ATI518PE
NAS1774-06	Single Wing	ATI518G
NAS1774-08	Single Wing	ATI518H
NAS1774-3	Single Wing	ATI518J
NAS1774-4	Single Wing	ATI518RO
NAS1774-5	Single Wing	ATI518RP

SINGLE WING

Nutplate Spec	Style	Part Number
NAS1774-6	Single Wing	ATI518RH
NAS1792-3	Single Wing	ATI518J
NAS1792-4	Single Wing	ATI518RO
NAS1792-5	Single Wing	ATI518RP
NAS687-06	Single Wing	ATI518G
NAS687-08	Single Wing	ATI518H
NAS687-3	Single Wing	ATI518J
NAS687-4	Single Wing	ATI518RO
NAS687-5	Single Wing	ATI518RP

DOUBLE WING

Nutplate Spec	Style	Part Number
MS21047-06	Double Wing	ATI518A
MS21047-08	Double Wing	ATI518B
MS21047-3	Double Wing	ATI518C
MS21047-4	Double Wing	ATI518D
MS21047-5	Double Wing	ATI518E
MS21047-6	Double Wing	ATI518F
MS21048-06	Double Wing	ATI518A
MS21048-08	Double Wing	ATI518B
MS21048-3	Double Wing	ATI518C
MS21048-4	Double Wing	ATI518D
MS21048-5	Double Wing	ATI518E
MS21048-6	Double Wing	ATI518F
MS21048-7	Double Wing	ATI518GP
MS21049-08	Double Wing	ATI518B
MS21049-3	Double Wing	ATI518C
MS21049-4	Double Wing	ATI518D
MS21049-5	Double Wing	ATI518E
MS21050-08	Double Wing	ATI518B
MS21050-3	Double Wing	ATI518C
MS21050-4	Double Wing	ATI518D
MS21050-5	Double Wing	ATI518E
MS21059-06	Double Wing	ATI518A
MS21059-08	Double Wing	ATI518B
MS21059-3	Double Wing	ATI518C
MS21059-4	Double Wing	ATI518D
MS21059-5	Double Wing	ATI518E
MS21059-6	Double Wing	ATI518F
MS21060-06	Double Wing	ATI518A
MS21060-08	Double Wing	ATI518B
MS21060-3	Double Wing	ATI518C
MS21060-4	Double Wing	ATI518D
MS21060-5	Double Wing	ATI518E
MS21060-6	Double Wing	ATI518F
MS21069-04	Double Wing	ATI518NA
MS21069-06	Double Wing	ATI518NB
MS21069-08	Double Wing	ATI518NC
MS21069-3	Double Wing	ATI518ND
MS21069-4	Double Wing	ATI518NE

MAJ : 02-18
 Vérif. : N.P.L
 Appr. : C . P

Distribution OPINDUS



Matériel conforme à la législation européenne

OPINDUS : 1, Rue Maurice Audibert 69800 SAINT PRIEST Tél : 04.78.21.73.14 - Fax : 04.78.21.73.01

CORRESPONDANCE FOURCHETTES - NORMES US

DOUBLE WING

Nutplate Spec	Style	Part Number
MS21069-5	Double Wing	ATI518NASAA5
MS21069-6	Double Wing	ATI518NASAA6
MS21070-04	Double Wing	ATI518NA
MS21070-06	Double Wing	ATI518NB
MS21070-08	Double Wing	ATI518NC
MS21070-3	Double Wing	ATI518ND
MS21070-4	Double Wing	ATI518NE
MS21070-5	Double Wing	ATI518NASAA5
MS21075-04	Double Wing	ATI518NA
MS21075-06	Double Wing	ATI518NB
MS21075-08	Double Wing	ATI518NC
MS21075-3	Double Wing	ATI518ND
MS21075-4	Double Wing	ATI518NE
MS21075-5	Double Wing	ATI518NASAA5
MS21076-04	Double Wing	ATI518NA
MS21076-06	Double Wing	ATI518NB
MS21076-08	Double Wing	ATI518NC
MS21076-3	Double Wing	ATI518ND
MS21076-4	Double Wing	ATI518NE
MS21076-5	Double Wing	ATI518NASAA5
NAS1068-04	Double Wing	ATI518NASAA4
NAS1068-06	Double Wing	ATI518NSAA06
NAS1068-08	Double Wing	ATI518NC
NAS1068-3	Double Wing	ATI518ND
NAS1068-4	Double Wing	ATI518NE
NAS1068-5	Double Wing	ATI518NASAA5
NAS1473-08	Double Wing	ATI518B
NAS1473-3	Double Wing	ATI518C
NAS1473-4	Double Wing	ATI518D
NAS1473-5	Double Wing	ATI518E
NAS1474-3	Double Wing	ATI518SP1171
NAS1791-3	Double Wing	ATI518C
NAS1791-4	Double Wing	ATI518D
NAS1791-5	Double Wing	ATI518E
NAS697-02	Double Wing	AT518NASAA02
NAS697-03	Double Wing	AT518NASAA03
NAS697-04	Double Wing	ATI518NASAA4
NAS697-06	Double Wing	ATI518NSAA06
NAS697-08	Double Wing	ATI518NC
NAS697-3	Double Wing	ATI518ND
NAS697-4	Double Wing	ATI518NE
NAS697-5	Double Wing	ATI518NASAA5
NAS697-6	Double Wing	ATI518NASAA6

CORNER

Nutplate Spec	Style	Part Number
MS21055-06	CORNER	ATI518R
MS21055-08	CORNER	ATI518S
MS21055-3	CORNER	ATI518T
MS21055-4	CORNER	ATI518U

CORNER

Nutplate Spec	Style	Part Number
MS21055-5	CORNER	ATI518V
MS21055-6	CORNER	ATI518W
MS21055-7	CORNER	ATI518X
MS21056-06	CORNER	ATI518R
MS21056-08	CORNER	ATI518S
MS21056-3	CORNER	ATI518T
MS21056-4	CORNER	ATI518U
MS21056-5	CORNER	ATI518V
MS21056-6	CORNER	ATI518W
MS21056-7	CORNER	ATI518X
MS21057-08	CORNER	ATI518S
MS21057-3	CORNER	ATI518T
MS21057-4	CORNER	ATI518U
MS21057-5	CORNER	ATI518V
MS21058-08	CORNER	ATI518S
MS21058-3	CORNER	ATI518T
MS21058-4	CORNER	ATI518U
MS21058-5	CORNER	ATI518V
MS21073-02	CORNER	ATI518NSCA02
MS21073-04	CORNER	ATI518SA
MS21073-06	CORNER	ATI518SB
MS21073-08	CORNER	ATI518SC
MS21073-3	CORNER	ATI518SD
MS21073-4	CORNER	ATI518SE
MS21073-5	CORNER	AT518NASCA5
MS21074-02	CORNER	ATI518NSCA02
MS21074-04	CORNER	ATI518SA
MS21074-06	CORNER	ATI518SB
MS21074-08	CORNER	ATI518SC
MS21074-3	CORNER	ATI518SD
MS21074-4	CORNER	ATI518SE
MS21074-5	CORNER	AT518NASCA5

SHORT LUG

Nutplate Spec	Style	Part Number
NAS1789-08	SHORT LUG	AT518NSDA08
NAS1789-3	SHORT LUG	ATI518TA
NAS1789-4	SHORT LUG	ATI518TB
NAS1789-5	SHORT LUG	ATI518TD
NAS1789-6	SHORT LUG	AT518NASDA6

MAJ : 02-18
Vérif. : N.P.L
Appr. : C . P

Distribution OPINDUS



Matériel conforme à la législation européenne

OPINDUS : 1, Rue Maurice Audibert 69800 SAINT PRIEST Tél : 04.78.21.73.14 - Fax : 04.78.21.73.01

TABLEAU DE CORRESPONDANCE

DRILL SIZE	MM	DECIMAL INCHES	DRILL SIZE	MM	DECIMAL INCHES	DRILL SIZE	MM	DECIMAL INCHES	DRILL SIZE	MM	DECIMAL INCHES
	0.10	.0039	45	2.08	.0820	5	5.22	.2055	7/16	11.11	.4375
	0.20	.0079	44	2.18	.0860	4	5.31	.2090	29/64	11.51	.4531
	0.25	.0098	43	2.26	.0890	3	5.41	.2130	15/32	11.91	.4688
	0.30	.0118	42	2.37	.0935	7/32	5.56	.2188	-	12.00	.4724
80	0.34	.0135	3/32	2.38	.0938	2	5.61	.2210	31/64	12.30	.4844
79	0.37	.0145	41	2.44	.0960	1	5.79	.2280	1/2	12.70	.5000
1/64	0.40	.0156	40	2.50	.0980	A	5.94	.2340	-	13.00	.5118
78	0.41	.0160	39	2.53	.0995	15/64	5.95	.2344	33/64	13.10	.5156
77	0.46	.0180	38	2.58	.1015	-	6.00	.2362	17/32	13.49	.5312
-	0.50	.0197	37	2.64	.1040	B	6.05	.2380	35/64	13.89	.5469
76	0.51	.0200	36	2.71	.1065	C	6.15	.2420	-	14.00	.5512
75	0.53	.0210	7/64	2.78	.1094	D	6.25	.2460	9/16	14.29	.5625
74	0.57	.0225	35	2.79	.1100	1/4	6.35	.2500	37/64	14.68	.5781
-	0.60	.0236	34	2.82	.1110	E	6.35	.2500	-	15.00	.5906
73	0.61	.0240	33	2.87	.1130	F	6.53	.2570	19/32	15.08	.5938
72	0.64	.0250	32	2.95	.1160	G	6.63	.2610	39/64	15.48	.6094
71	0.66	.0260	-	3.00	.1181	17/64	6.75	.2656	5/8	15.88	.6250
-	0.70	.0276	31	3.05	.1200	H	6.76	.2660	-	16.00	.6299
70	0.71	.0280	1/8	3.18	.1250	I	6.91	.2720	41/64	16.27	.6406
69	0.74	.0292	30	3.26	.1285	-	7.00	.2756	21/32	16.67	.6562
-	0.75	.0295	29	3.45	.1360	J	7.04	.2770	-	17.00	.6693
68	0.79	.0310	28	3.57	.1405	K	7.14	.2810	43/64	17.07	.6719
1/32	0.79	.0313	9/64	3.57	.1406	9/32	7.14	.2812	11/16	17.46	.6875
-	0.80	.0315	27	3.66	.1440	L	7.37	.2900	45/64	17.86	.7031
67	0.81	.0320	26	3.73	.1470	M	7.49	.2950	-	18.00	.7087
66	0.84	.0330	25	3.8	.1495	19/64	7.54	.2969	23/32	18.26	.7188
65	0.89	.0350	24	3.86	.1520	N	7.67	.3020	47/64	18.65	.7344
-	0.90	.0354	23	3.91	.1540	5/16	7.94	.3125	-	19.00	.7480
64	0.91	.0360	5/32	3.97	.1562	-	8.00	.3150	3/4	19.05	.7500
63	0.94	.0370	22	3.99	.1570	O	8.03	.3160	49/64	19.45	.7656
62	0.97	.0380	-	4.00	.1575	P	8.20	.3230	25/32	19.84	.7812
61	0.99	.0390	21	4.04	.1590	21/64	8.33	.3281	-	20.00	.7874
-	1.00	.0394	20	4.09	.1610	Q	8.43	.3320	51/64	20.24	.7969
60	1.02	.0400	19	4.22	.1660	R	8.61	.3390	13/16	20.64	.8125
59	1.04	.0410	18	4.31	.1695	11/32	8.73	.3438	-	21.00	.8268
58	1.07	.0420	11/64	4.37	.1719	S	8.84	.3480	53/64	21.03	.8281
57	1.09	.0430	17	4.39	.1730	-	9.00	.3543	27/32	21.43	.8438
56	1.18	.0465	16	4.50	.1770	T	9.09	.3580	55/64	21.84	.8594
3/64	1.19	.0469	15	4.57	.1800	23/64	9.13	.3594	-	22.00	.8661
55	1.32	.0520	14	4.62	.1820	U	9.35	.3680	7/8	22.23	.8750
54	1.40	.0550	13	4.70	.1850	3/8	9.53	.3750	57/64	22.62	.8906
53	1.51	.0595	3/16	4.76	.1875	V	9.56	.3770	-	23.00	.9055
1/16	1.59	.0625	12	4.80	.1890	W	9.80	.3860	29/32	23.02	.9062
52	1.61	.0635	11	4.85	.1910	25/64	9.92	.3906	59/64	23.42	.9219
51	1.70	.0670	10	4.91	.1935	-	10.00	.3937	15/16	23.81	.9375
50	1.78	.0700	9	4.98	.1960	X	10.08	.3970	-	24.00	.9449
49	1.85	.0730	-	5.00	.1968	Y	10.26	.4040	61/64	24.21	.9531
48	1.93	.0760	8	5.05	.1990	13/32	10.32	.4062	31/32	24.61	.9688
5/64	1.98	.0781	7	5.11	.2010	Z	10.49	.4130	-	25.00	.9842
47	1.99	.0785	13/64	5.16	.2031	27/64	10.72	.4219	63/64	25.00	.9844
-	2.00	.0787	6	5.18	.2040	-	11.00	.4331	1	25.40	1.000
46	2.06	.0810									

MAJ : 02-18
 Vérif. : N.P.L
 Appr. : C . P

Distribution OPINDUS



Matériel conforme à la législation européenne

OPINDUS : 1, Rue Maurice Audibert 69800 SAINT PRIEST Tél : 04.78.21.73.14 - Fax : 04.78.21.73.01