

SPECIALTY



Index	
Routers	71
Clinch Nut Tools	73
Tappers	74
Rivet Shavers	74

Skin Clamp Runners	75
Saws & Cutoff Tools	75 – 76
Nibblers & Shears	77
Aerospace	79 – 80
Specialty Accessories	81 – 82

SPECIALTY

Special Applications Require Special Tools

Sioux Tools has a superb selection of specialty tools designed for very specific applications, and as always, we manufacture the finest tools in the industry.

Routers

Sioux offers a selection of routers and laminate trimmers in 1.0 hp (0.75 kw) or 1.5 hp (1.1 kw) configurations. They feature lockoff lever, twist or finger throttles and come with a selection of different bases.

Tappers

Choose from pistol grip or inline configurations. The pistol grip offers chuck capacity from No. 10 thru 1/2" size.

Metal Working Tools

Nibbler and Shear

Our 1.0 hp (0.75 kw) nibbler and shear has the power for use on cold rolled sheet steel up to 18 gauge.

Shears

This versatile tool cuts 18 gauge steel and plastics up to 3/32" thick. It also makes straight or curve cuts clean and smooth.

Aircraft Specialty Tools

Sioux Tools offers several specialized tools for the aircraft industry such as Skin Clamp Runners, which are available in pistol grip or our exclusive Z-handle design. Rivet Shavers come in both pistol grip and inline configurations, with speeds up to 21,000 rpm.



Clinch Nut Tools

As manufacturing trends continue to evolve manufacturers are finding more and more uses for thin wall assembly applications. Sioux Tools has a selection of Clinch Nut tools that handle these unique fasteners with precision and ease, and our Rapid Reverse feature makes them the best Clinch Nut tool on the market today.

Air Powered Saws

Sioux Tools offers an outstanding and powerful Reciprocating Saw, offering variable speed control for precise cutting action in any application.



ROUTERS



Performance:

Power: 1 hp (0.75 kW)
 Speed: 18,000 rpm – 25,000 rpm
 Collet Size: 1/4" (6 mm)

Features:

Lockoff Lever Throttle
 Front Exhaust
 Interchangeable Base
 Built-in Speed Control

1 hp (0.75 kW) Routers



Model Number	Collet Size	Free Speed	Weight		Height		Maximum Air Consumption		Sound Level
		rpm	lb	kg	in	mm	cfm	l/s	dB(A)
Template Nose									
SRT10S18N	1/4	18,000	2.1	0.95	9	230	30	14	78
SRT10S18M6N	6 mm	18,000	2.1	0.95	9	230	30	14	78
SRT10S25N	1/4	25,000	2.1	0.95	9	230	30	14	78
SRT10S25M6N	6 mm	25,000	2.1	0.95	9	230	30	14	78
3" Base									
SRT10S18B	1/4	18,000	2.1	0.95	9	230	30	14	78
SRT10S18M6B	6 mm	18,000	2.1	0.95	9	230	30	14	78
SRT10S18BB	1/4	18,000	2.6	1.15	8.3	210	30	14	78
SRT10S25B	1/4	25,000	2.1	0.95	9	230	30	14	78
SRT10S25M6B	6 mm	25,000	2.1	0.95	9	230	30	14	78
SRT10S25BB	1/4	25,000	2.6	1.15	8.3	210	30	14	78
Laminate Trimmer									
SRT10S18LT	1/4	18,000	2.9	1.30	9.3	235	30	14	78
SRT10S25LT	1/4	25,000	2.9	1.30	9.3	235	30	14	78

Template guides must be ordered separately

General: Air Inlet Size: 1/4" NPT • Recommended Hose Size: 3/8" (10 mm) • Performance rated @ 90 psig (6.2 bar) air pressure

Standard Equipment: Parts List • Safety and Instruction Manual • Base/Head Assembly, Collet, Collet Wrenches

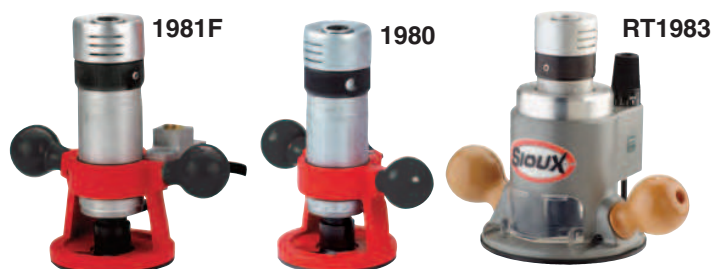
Accessories: Router Accessories, see pages 81 – 82

Performance:

Power: 1.5 hp (1.2 kW)
 Speed: 20,000 rpm
 Collet Size: 1/4" – 1/2"

Features:

Twist and Finger Throttle
 4" (102 mm) or 6" (152 mm)
 Diameter Base
 Side Exhaust



1.5 hp (1.2 kW) Routers

Model Number	Collet Size	Free Speed	Weight		Height		Base Diameter		Maximum Air Consumption		Sound Level
		rpm	lb	kg	in	mm	in	mm	cfm	l/s	dB(A)
Finger Throttle											
1981F	1/2"	20,000	6	2.7	9.8	248	4	102	38	18	85
Twist Throttle											
1980A	1/4"	20,000	4.5	2	7.6	193	4	102	38	18	85
1980	3/8"	20,000	4.5	2	7.6	193	4	102	38	18	85
RT1981	1/2"	20,000	4.5	2	7.6	193	4	102	38	18	85
1982A	1/4"	20,000	7.5	3.4	8.3	211	6	152	38	18	85
RT1982	3/8"	20,000	7.5	3.4	8.3	211	6	152	38	18	85
RT1983	1/2"	20,000	4.8	2.2	8.3	211	6	152	38	18	85

General: Air Inlet Size: 1/4" NPT • Recommended Hose Size: 3/8" (10 mm) • Performance rated @ 90 psig (6.2 bar) air pressure

Standard Equipment: Parts List • Safety and Instruction Manual • Base & Collet Wrenches

Accessories: Router Accessories, see pages 81 – 82



SAFETY PRECAUTION: Read and follow all safety and operating instructions.
WARNING: Face & eye protection must be worn while operating power tools, per ANSI B186.1

SPECIALTY

The Fastest Way Out of a Clinch

Sioux Tool's new rapid reverse Clinch Nut Tools are meeting the demand of today's manufacturing marketplace with versatility and simplicity. Clinch nuts, also known as captive nuts, provide a reliable means of securing assembly components in thin wall applications. These unique fasteners are inserted into predrilled holes in thin materials such as sheet metal, and with the aid of a Sioux Clinch Nut Tool, compress and expand to clamp the material. This process creates a strong, secure base with a male or female thread for assembling additional components.

Installing Clinch Nut Fasteners

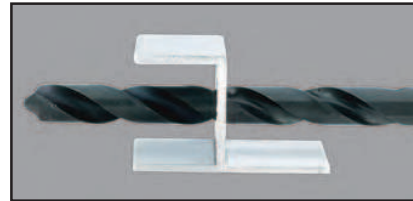
When installing clinch nut fasteners, the key to achieving high productivity with accurate, repeatable results is matching the right tool and fastener to your application. The right combination of rundown speed and stall torque in conjunction with a quick reverse method for disengaging the tool, will provide the best results. The Sioux SCN series tools offer higher torque in a wide range of speeds so you can match the right tool to your application. Our powerful tools allow you to use faster rundown speeds while maintaining high torque output, plus our exclusive Rapid Reverse feature makes short work of direction changes ensuring fast disengagement from the fastener.

Reducing Physical Load

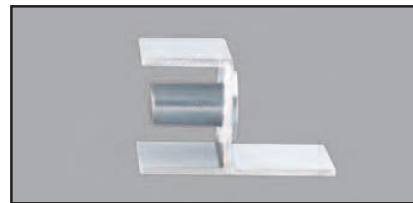
The ergonomic pistol housing with comfort rubber grip ensures operator comfort while maintaining superb balance and control. The powerful, precision motor ensures fast and consistent installation of fasteners in a variety of applications, and the wide selection of speeds and threads in both English and metric sizes make Sioux Tools your choice for all your clinch nut applications.

Clinch Nut Installation Procedure

Step 1 – Pre-drill hole for fastener.



Step 2 – Insert fastener.



Step 3 – Thread tool into fastener.

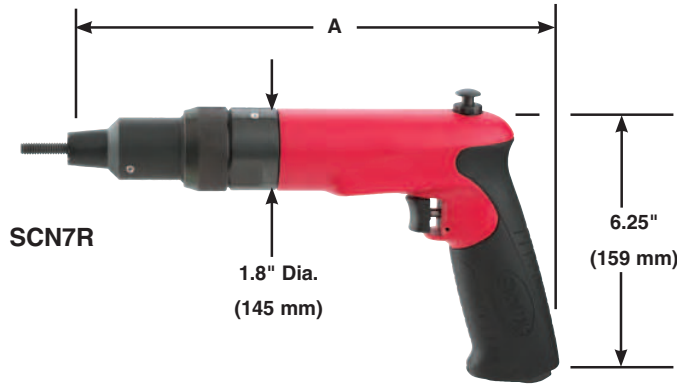


Step 4 – Run tool to collapse fastener.
Reverse tool to release.



Step 5 – Assemble.





Performance:

Torque: 60 in. lb (6.5 Nm) – 400 in. lb (45 Nm)
 Speed: 300 rpm – 2500 rpm

Features:

Reversible
 Pistol Grip

1 hp (0.75 kW) Clinch Nut Tools



Model Number	Free Speed	Maximum Torque		Weight		"A" Dimension		Side To Center		Maximum Air Consumption		Sound Level
	rpm	in lb	Nm	lb	kg	in	mm	in	mm	cfm	l/s	dB(A)
Pistol Grip – Rapid Reverse – Power Units Specifications												
SCN3R	300	400	45.2	3.2	1.5	11	279	0.9	20	30	14	80
SCN5R	500	325	36.7	3.2	1.5	11	279	0.9	20	30	14	80
SCN7R	700	220	24.8	3.2	1.5	11	279	0.9	20	30	14	80
SCN12R	1200	145	16.4	3.2	1.5	11	279	0.9	20	30	14	80
SCN20R	2000	80	9	2.8	1.3	10	254	0.9	20	30	14	80
SCN25R	2500	60	6.5	2.8	1.3	10	254	0.9	20	30	14	80

Power units can be ordered separately using part number above. For ordering complete tools select the appropriate power unit from the chart above and head assembly from the chart below and combine their part numbers as shown in the following example: SCN3R420.

General:

Air Inlet Size: 1/4" NPT • Recommended Hose Size: 3/8" (10 mm) • Performance rated @ 90 psig (6.2 bar) air pressure

Standard Equipment:

Parts List • Safety and Instruction Manual • Comfort Grip

Accessories:

Clinch Nut Accessories, see pages 81 – 82



Clinch Nut (Female)

Thread Size	Order Number Suffix	
	Serrated Nose	Smooth Nose
#4-40	440	440S
M3 x 0.5	M305	M305S
#6-32	632	632S
#8-32	832	832S
M4 x 0.7	M407	M407S
#10-24	1024	1024S
#10-32	1032	1032S
M5 x 0.8	M508	M508S
1/4-20	420	420S
M6 x 1.0	M610	M610S
5/16-18	518	518S
M8 x 1.25	M8125	M8125S
3/8-16	616	616S
M10 x 1.5	M1015	M1015S



Clinch Stud (Male)

Thread Size	Order Number Suffix	
	Serrated Nose	Smooth Nose
#4-40	440F	440SF
M3 x 0.5	M305F	M305SF
#6-32	632F	632SF
#8-32	832F	832SF
M4 x 0.7	M407F	M407SF
#10-24	1024F	1024SF
#10-32	1032F	1032SF
M5 x 0.8	M508F	M508SF
1/4-20	420F	420SF
M6 x 1.0	M610F	M610SF
5/16-18	518F	518SF
M8 x 1.25	M8125F	M8125SF
3/8-16	616F	616SF
M10 x 1.5	M1015F	M1015SF

Head assemblies can be ordered separately by adding the prefix SCN to the above part number (example SCN-420).



SAFETY PRECAUTION: Read and follow all safety and operating instructions.
WARNING: Face & eye protection must be worn while operating power tools, per ANSI B186.1

SPECIALTY | SIOUX TOOLS INDUSTRIAL CATALOG

TAPPERS

Performance:

Power: 1 hp (0.75 kW)
 Torque: 145 in. lb (16 Nm) –
 400 in. lb (45 Nm)
 Speed: 300 rpm – 1200 rpm

Features:

Pistol Grip Handle
 Rapid Reverse

Capacity:

1/4" in Steel
 5/16" in Aluminum



Tappers

Model Number	Chuck Capacity		Maximum Torque		Free Speed rpm	Weight		Length		Air Consumption		Sound Level dB(A)
	in	mm	in lb	Nm		lb	kg	in	mm	cfm	l/s	
1 hp (0.75 kW) – Pistol Grip – Trigger Start												
STP10P3C20	#10-5/16	5-8	400	45	300	2.9	1.3	7.3	185	30	14	80
STP10P3C32	1/4-1/2	6-13	400	45	300	2.9	1.3	7.3	185	30	14	80
1 hp (0.75 kW) – Inline – B12 Taper Spindle												
STP10S12B12			145	16	1200	2.5	1.2	9.5	240	30	14	78
STP10S7B12			220	25	700	2.5	1.2	9.5	240	30	14	78
STP10S5B12			325	37	500	2.5	1.2	9.5	240	30	14	78
STP10S3B12			400	45	300	2.5	1.2	9.5	240	30	14	78

General: Air Inlet Size: 1/4" NPT • Recommended Hose Size: 3/8" (10 mm) • Performance rated @ 90 psig (6.2 bar) air pressure

Standard Equipment: Parts List • Safety and Instruction Manual • Comfort Grip • Tapping Chuck (model STP10P3C series)

Accessories: Tapper Accessories, see pages 81 – 82

RIVET SHAVERS

Performance:

Power: 0.6 hp (0.45 kW)
 - 1 hp (0.75 kW)
 Speed: 21,000 rpm

Features:

Pistol Grip & Inline



Rivet Shavers

Model Number	Cutter Diameter		Free Speed rpm	Weight		Length		Side to Center		Maximum Air Consumption		Sound Level dB(A)
	in	mm		lb	kg	in	mm	in	mm	cfm	l/s	
0.6 hp (0.45 kW) – Pistol Grip – 1/4"-28 Internal Thread												
SRS6P21-5	5/16	8	21,000	2	0.9	6.5	165	0.8	21	25	12	84
SRS6P21-6	3/8	10	21,000	2	0.9	6.5	165	0.8	21	25	12	84
SRS6P21-7	7/16	11	21,000	2	0.9	6.5	165	0.8	21	25	12	84
SRS6P21-8	1/2	13	21,000	2	0.9	6.5	165	0.8	21	25	12	84
SRS6P21-9	9/16	14	21,000	2	0.9	6.5	165	0.8	21	25	12	84
SRS6P21-10	5/8	16	21,000	2	0.9	6.5	165	0.8	21	25	12	84
SRS6P21-9W	9/16	14	21,000	2	0.9	6.5	165	0.8	21	25	12	84
1 hp (0.75 kW) – Pistol Grip – 1/4"-28 Internal Thread												
SRS10P21-5	5/16	8	21,000	2.7	1.2	8	205	0.9	23	25	12	80
SRS10P21-6	3/8	10	21,000	2.7	1.2	8	205	0.9	23	25	12	80
SRS10P21-7	7/16	11	21,000	2.7	1.2	8	205	0.9	23	25	12	80
SRS10P21-8	1/2	13	21,000	2.7	1.2	8	205	0.9	23	25	12	80
SRS10P21-9	9/16	14	21,000	2.7	1.2	8	205	0.9	23	25	12	80
SRS10P21-10	5/8	16	21,000	2.7	1.2	8	205	0.9	23	25	12	80
1 hp (0.75 kW) – Inline – 1/4"-28 Internal Thread												
SRS10S21-8	1/2	13	21,000	2.5	1.1	10	255	0.9	23	30	14	78

General: Air Inlet Size: 1/4" NPT • Recommended Hose Size: 3/8" (10 mm) • Performance rated @ 90 psig (6.2 bar) air pressure

Standard Equipment: Parts List • Safety and Instruction Manual • Skirt • Comfort Grip (Pistol Grip models)

Accessories: Rivet Shaver Accessories, see pages 81 – 82



SAFETY PRECAUTION: Read and follow all safety and operating instructions.
WARNING: Face & eye protection must be worn while operating power tools, per ANSI B186.1

SKIN CLAMP RUNNERS



Performance:

Speed: 2200 rpm - 2500 rpm

Features:

Pistol Grip and Z-Handle
1/2-12 Point Internal, 9/16-6 Point External Hex

Skin Clamp Runners

Model Number	Free Speed		Weight		Length		Side to Center		Air Consumption Free Speed		Sound Level
	rpm		lb	kg	in	mm	in	mm	cfm	l/s	dB(A)
Z-Handle											
2S2300SR	2200		2.6	1.2	5.7	145	0.9	23	16	8	75
Pistol Grip											
SSR6P25	2500		2.7	1.2	9.2	234	0.9	23	30	14	78

General:

Air Inlet Size: 1/4" NPT • Recommended Hose Size: 3/8" (10 mm) • Performance rated @ 90 psig (6.2 bar) air pressure

Standard Equipment:

Parts List • Safety and Instruction Manual • Comfort Grip (Pistol Grip models)

Accessories:

Skin Clamp Runner Accessories, see pages 81 – 82

RECIPROCATING SAWS



1300

Performance:

Power: 1 hp (0.75 kW)
Strokes per Minute: 1800
Stroke Length: 0.6" (15 mm)

Features:

Lockoff Trigger Start
Variable Speed
Swivel Air Inlet

Reciprocating Saw

Model Number	Stroke Length		Strokes per Minute	Power		Weight		Length		Air Consumption		Sound Level
	in	mm		hp	kW	lb	kg	in	mm	cfm	l/s	dB(A)
1300	0.6	15	1800	1	0.7	7.8	3.5	17.2	437	35	17	86

General:

Air Inlet Size: 1/4" NPT • Recommended Hose Size: 3/8" (10 mm) • Performance rated @ 90 psig (6.2 bar) air pressure

Standard Equipment:

Parts List • Safety and Instruction Manual • Swivel Air Inlet • 2 Blades • Protective Boot

Accessories:

Reciprocating Saw Accessories, see pages 81 – 82

Performance:

Free Speed: 10,000 rpm
Stroke Length: 0.375" (10 mm)
Cuts up to 1/8" (3 mm) mild steel

Features:

Lock-off lever start
Low vibration
360° Adjustable Exhaust Deflector
Dual chuck accepts: 0.035" standard air saw blades AND 6" long reciprocating saw blades



RS10K

Reciprocating Saw

Model Number	Stroke Length		Strokes per Minute	Weight		Length		Air Consumption		Sound Level
	in	mm		lb	kg	in	mm	cfm	l/s	dB(A)
RS10K	0.375	10	10,000	1.53	0.69	9.4	238.76	1	0.5	87.1

General:

Air Inlet Size: 1/4" NPT • Recommended Hose Size: 3/8" (10 mm) • Performance rated @ 90 psig (6.2 bar) air pressure

Standard Equipment:

Parts List • Safety and Instruction Manual • Swivel Air Inlet • 2 Blades • Protective Boot

Accessories:

Reciprocating Saw Accessories, see pages 81 – 82



SAFETY PRECAUTION: Read and follow all safety and operating instructions.
WARNING: Face & eye protection must be worn while operating power tools, per ANSI B186.1

SPECIALTY | SIOUX TOOLS INDUSTRIAL CATALOG

CUTOFF TOOL (TYPE 1)

Performance:

Power: 1 hp (0.75 kW)
Free Speed: 18,000 rpm – 25,000 rpm

Features:

Inline
Lockoff Lever Start
Front or Rear Exhaust



SCO10S253F



Cutoff Tool

Model Number	Blade Diameter		Depth of Cut		Free Speed rpm	Weight		Length		Air Consumption		Sound Level dB(A)	Exhaust
	in	mm	in	mm		lb	kg	in	mm	cfm	l/s		
1 hp (0.75 kW) – Cutoff Tool – Inline – Lockoff lever Start													
SCO10S184F	4	100	1.1	28	18,000	2	0.9	8.3	210	30	14	89.1	Front
SCO10S184R	4	100	1.1	28	18,000	2	0.9	8.3	210	30	14	87.8	Rear
SCO10S204F	4	100	1.1	28	20,000	2	0.9	8.3	210	30	14	90.3	Front
SCO10S204R	4	100	1.1	28	20,000	2	0.9	8.3	210	30	14	91.6	Rear
SCO10S253F	3	76	1	25	25,000	2	0.9	8.3	210	30	14	89	Front
SCO10S253R	3	76	1	25	25,000	2	0.9	8.3	210	30	14	87.8	Rear

General:

Air Inlet Size: 1/4" NPT • Recommended Hose Size: 3/8" (10 mm) • Performance rated @ 90 psig (6.2 bar) air pressure

Standard Equipment:

Parts List • Safety and Instruction Manual • 1 Blade • Spindle Wrenches & Guard

Accessories:

Panel and Cutoff Saw Accessories, see pages 81 – 82

ANGLE CUTOFF TOOLS (TYPE 1)

Features:

Heavy duty spiral bevel gearing for durability and smooth operation

4 position indexable angle head
360 degree rotatable guard
Grease zerk in gear case



SCO10A106



Angle Cutoff Tool

Model Number	Blade Diameter		Depth of Cut		Free Speed rpm	Weight		Length		Air Consumption		Sound Level dB(A)	Spindle Thread	Exhaust
	in	mm	in	mm		lb	kg	in	mm	cfm	l/s			
SCO7A184	4	100	1.2	30	18,000	2.5	1.4	6.4	163	25	12	TBD	3/8"-24	Front
SCO10A106	6	150	2	51	10,000	3.7	1.7	8.75	220	35	16.5	91.2	5/8"-11	Rear
SCO10A125	5	125	1.5	38	12,000	3.5	1.6	8.75	220	35	16.5	87.3	5/8"-11	Rear
SCO10A184	4	100	1.2	30	18,000	2.5	1.4	7.75	195	35	16.5	TBD	3/8"-24	Rear
SCO10AXL124	4	100	1	25	12,000	3.6	1.6	11.25	285	35	17	83.7	3/8"-24	Rear

General:

Air Inlet Size: 1/4" NPT • Recommended Hose Size: 3/8" (10 mm) • Performance rated @ 90 psig (6.2 bar) air pressure

Standard Equipment:

Parts List • Safety and Instruction Manual • 1 Blade • Spindle Wrenches & Guard

Accessories:

Angle Cutoff Tool Accessories, see page 81 – 82



SCO1AX124

SCO1AX124G



Angle Metal Body Extended Cutoff Tool

Model Number	Blade Diameter		Depth of Cut		Free Speed rpm	Weight		Length		Air Consumption		Sound Level dB(A)	Spindle Thread	Exhaust
	in	mm	in	mm		lb	kg	in	mm	cfm	l/s			
1 hp (0.75 kW) – Lever Throttle – Aluminum Housing														
SCO1AX124	4	100	1	25	12,000	3.9	1.8	10.5	267	35	16.5	88	3/8" - 24	Front
1 hp (0.75 kW) – Lever Throttle – Aluminum Housing with Grip														
SCO1AX124G	4	100	1	25	12,000	3.6	1.6	10.5	267	35	16.5	88	3/8" - 24	Front
1 hp (0.75 kW) – Lever Throttle – Steel Housing														
SCOS1AX124	4	100	1	25	12,000	4.5	2	10.5	267	35	16.5	89	3/8" - 24	Front
1 hp (0.75 kW) – Lever Throttle – Steel Housing with Grip														
SCOS1AX124G	4	100	1	25	12,000	4.1	1.9	10.5	267	35	16.5	87	3/8" - 24	Front

General:

Air Inlet Size: 1/4" NPT • Recommended Hose Size: 3/8" (10 mm) • Performance rated @ 90 psig (6.2 bar) air pressure

Standard Equipment:

Parts List • Safety and Instruction Manual • 1 Blade • Spindle Wrenches & Guard

Accessories:

Angle Cutoff Tool Accessories, see page 81 – 82



SAFETY PRECAUTION: Read and follow all safety and operating instructions.
WARNING: Face & eye protection must be worn while operating power tools, per ANSI B186.1

NIBBLER



SNH10S18

Performance:

Power: 1 hp (0.75 kW)
Capacity: 18 Gauge Cold Rolled Steel

Nibbler

Model Number	Capacity (Cold Rolled Steel)	Power		Weight		Length		Side to Center		Maximum Air Consumption		Sound Level
	in	hp	kW	lb	kg	in	mm	in	mm	cfm	l/s	dB(A)
Nibbler SNH10S18 ¹	18 Ga	1	0.75	2.65	1.2	8.5	215	0.9	32	30	14	82.4

¹ Not CE Certified

General:

Air Inlet Size: 1/4" NPT • Recommended Hose Size: 3/8" (10 mm) • Performance rated @ 90 psig (6.2 bar) air pressure

Standard Equipment:

Parts List • Safety and Instruction Manual

Accessories:

Nibbler Accessories, see pages 81 – 82

SHEARS



SSH10S18



SSH10P18

Performance:

Power: 1 hp (0.75 kW)
Capacity: 18 Gauge Cold Rolled Steel

Shears

Model Number	Capacity (Cold Rolled Steel)	Power		Weight		Length		Side to Center		Maximum Air Consumption		Sound Level
	in	hp	kW	lb	kg	in	mm	in	mm	cfm	l/s	dB(A)
Shears SSH10S18 ¹	18 Ga	1	0.75	2.75	1.25	11	280	0.9	32	30	14	79.4
SSH10P18	18 Ga.	1	0.75	2.9	1.3	10	255	0.9	22	30	14	85.1

¹ Not CE Certified

General:

Air Inlet Size: 1/4" NPT • Recommended Hose Size: 3/8" (10 mm) • Performance rated @ 90 psig (6.2 bar) air pressure

Standard Equipment:

Parts List • Safety and Instruction Manual • Comfort Grip (SSH10P18)

Accessories:

Shears Accessories, see pages 81 – 82



SAFETY PRECAUTION: Read and follow all safety and operating instructions.
WARNING: Face & eye protection must be worn while operating power tools, per ANSI B186.1

SPECIALTY

Compression Riveters

Principles of Operation

Air powered compression riveters deliver a squeezing action, which drives the rivet by “flowing” the rivet metal with compressed forces. Squeezing action is obtained by coupling an air cylinder and piston to a wedge or cam, thus multiplying the original force to extreme ratios. High compressive forces are obtained from a relatively compact unit having small diameter cylinders and using very little compressed air.

The advantage of squeeze riveting is simple sounds of air exhaust and forward piston movement developing tremendous pressures being exerted at the work point.

Optimum control may be obtained in compression riveting. The rivet head is formed by a steady, uniform squeeze action. The set plunger and dolly are an integral part of the squeezer itself.

Length of the return stroke may be adjusted that the plunger itself does not have to travel its full length.

Consistently applied pressure makes for a better appearance of the finished product as well as giving the ultimate in structural efficiency.

Classification of Squeezers:

Alligator: The squeezing action of the jaws are similar to the movement of an Alligators jaws.

‘C’ Type: The rivet is squeezed between the two ends of the ‘C’.

Type of Rivet:

Rivet material.

Rivet body diameter.

Rivet length before and after compression.

Force required to compress rivet.

Riveter Selection Guide:

What material is the rivet made from?

What size is the rivet?

What is the form of the head?

What components are being assembled?

Are there any clearance problems?

Is Alligator or ‘C’ type yoke required?

How is the application being done now?

Are there any special considerations?

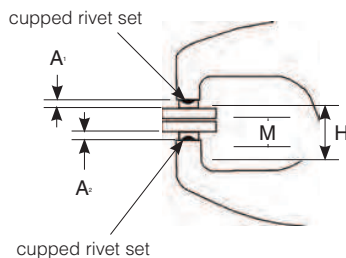
COMPRESSION RIVETERS

For maximum power the combined length of the two rivet sets must be of the correct length.

Determine the correct lengths as follows:

1) When two cupped rivet sets are used:

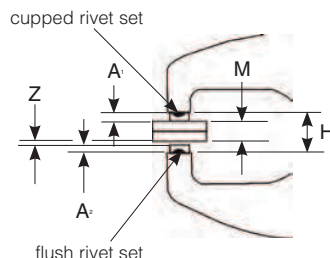
The length of the body dimensions of the two rivet sets (A1, A2) should equal the closed height dimension of the yoke (H) minus the total thickness of material being riveted together.



$$A_1 + A_2 = H - M$$

2) When one cupped set and one flush set are used:

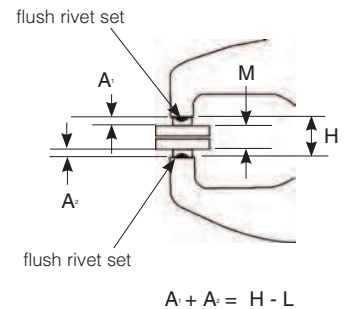
The length of the body dimensions of the two rivet sets (A1, A2) should equal the closed height dimension of the yoke H minus the total thickness of material being riveted (M) and the height of the finished rivet head (Z) compressed by the flush set (A).



$$A_1 + A_2 = H - M - Z$$

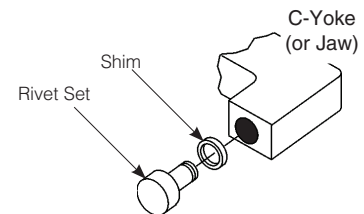
3) When two flush sets are used:

The length of the body dimensions of the two rivet sets (A1, A2) should equal the closed height dimension of the yoke (H) minus the overall length of the rivet (M) after it is compressed.



$$A_1 + A_2 = H - L$$

If necessary, select rivet sets a little short and shim to the correct length using spacer shims.



SAFETY PRECAUTION: Read and follow all safety and operating instructions.
WARNING: Face & eye protection must be worn while operating power tools, per ANSI B186.1

COMPRESSION RIVETERS

Features:

Single, Tandem, and Triple Cylinder Options
 Riveting Capacity:
 1/8" (3 mm) (Single Cylinder)
 3/16" (5 mm) (Tandem Cylinder)
 1/4" (6 mm) (Triple Cylinder)
 Safety Throttle



Compression Riveters

Model Number	Rivet Set Shank Diameter		Cap Cold Rivet Diameter				Standard Alligator Yoke Dimension				Max Force at 90 psi		Moving Jaw				Net Weight w/ Yoke		Overall Length	
			Steel		Alum		Reach		Closed Ht				Max Travel		Stroke at Max Force					
	in	mm	in	mm	in	mm	in	mm	in	mm	in	mm	in	mm	in	mm	lb	kg	in	mm
CR-1 – Single Cylinder																				
SZE5000	NA	NA	3/32	2	1/8	3	NA	NA	NA	NA	3000	13.4	5/8	16	final 1/16	2	2-1/4	1	7-11/16	195
SZE5015	3/16	5	3/32	2	1/8	3	1-1/2	38	7/8	22	3000	13.4	5/8	16	final 1/16	2	3.75	1.7	9-3/16	233
SZE5022	3/16	5	3/32	2	3/32	2	2-1/4	57	7/8	22	2200	9.8	7/8	22	final 3/32	2	4.25	1.9	10-1/8	257
SZE5030	3/16	5	3/32	2	3/32	2	3	76	7/8	22	1800	8	1-1/4	32	final 1/8	3	4.75	2.2	10-7/8	276
CR-1 – Tandem Cylinder																				
SZE7000	NA	NA	5/32	4	3/16	5	NA	NA	NA	NA	6000	26.7	5/8	16	final 1/16	2	4	1.8	10-1/2	267
SZE7015	3/16	5	5/32	4	3/16	5	1-1/2	38	7/8	22	6000	26.7	5/8	16	final 1/16	2	5.5	2.5	12	305
SZE7022	3/16	5	1/8	3	5/32	4	2-1/4	57	7/8	22	4300	19.1	7/8	22	final 3/32	2	6	2.7	13	330
SZE7030	3/16	5	3/32	2	1/8	3	3	76	7/8	22	3400	15.1	1-1/4	32	final 1/8	3	6.25	2.8	13.75	349
CR-1 – Triple Cylinder																				
SZE9000	NA	NA	3/16	5	1/4	6	NA	NA	NA	NA	9000	40.1	5/8	16	final 1/16	2	5.5	2.5	14.5	368
SZE9015	3/16	5	3/16	5	1/4	6	1-1/2	38	7/8	22	9000	40.1	5/8	16	final 1/16	2	7	3.2	16	406
SZE9022	3/16	5	5/32	4	3/16	5	2-1/4	57	7/8	22	7000	31.2	7/8	22	final 3/32	2	7.5	93.4	16.75	426
SZE9030	3/16	5	5/32	4	3/16	5	3	76	7/8	22	5200	23.1	1-1/4	32	final 1/8	3	8	3.6	17.5	445

General:

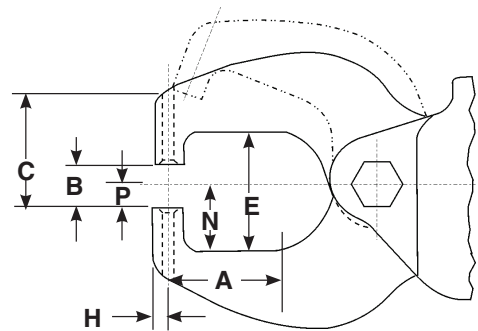
Air Inlet Size: 1/4" NPT • Recommended Hose Size: 3/8" (10 mm) • Performance rated @ 90 psig (6.2 bar) air pressure

Standard Equipment:

Parts List • Safety and Instruction Manual • Safety throttle action

Alligator Yoke Nomenclature

- A Reach
- B Closed Height
- C Total
- E Gap
- H Lowest Offset
- N Depth from centerline to Stationary Jaw Gap
- P Depth from centerline to Stationary Jaw set hole surface



A		B		C		E		H		N		P	
in	mm	in	mm	in	mm	in	mm	in	mm	in	mm	in	mm
1-1/2	38	7/8	22	1-1/2	38	1-5/8	41	7/32	6	1.0	1	5/8	16
2-1/4	57	7/8	22	1-7/8	48	2-1/8	54	7/32	6	1-1/4	32	5/8	16
3	76	7/8	22	2-1/8	54	2-1/8	54	7/32	6	1-1/4	32	5/8	16



SAFETY PRECAUTION: Read and follow all safety and operating instructions.
WARNING: Face & eye protection must be worn while operating power tools, per ANSI B186.1

COMPRESSION RIVETERS

Features:

- Single, Tandem, and Triple Cylinder Options
- Riveting Capacity:
 - 1/8" (3 mm) (Single Cylinder)
 - 3/16" (5 mm) (Tandem Cylinder)
 - 1/4" (6 mm) (Triple Cylinder)
- Safety Throttle



SZE3015



SZE6015



SZE8015

Compression Riveters

Model Number	Rivet Set Shank Diameter		Cap Cold Rivet Diameter				Standard "C" Yoke Dimension				Closed Height		Max Travel		Max Force at 90 psi		Stroke at Max Force		Net Weight w/ Yoke		Overall Length	
			Steel		Alum		Reach		Gap													
	in	mm	in	mm	in	mm	in	mm	in	mm	in	mm	in	mm	lb	kN	in	mm	lb	kg	in	mm
CR-1 – Single Cylinder																						
SZEA3000	N/A	N/A	3/32	2	1/8	3	N/A	N/A	N/A	N/A	N/A	N/A	9/16	14	3000	13.4	f-1/16	2	3-1/2	1.6	8-1/2	216
SZEA3015	3/16	5	3/32	2	1/8	3	1-1/2	38	1-1/4	32	11/16	78	9/16	14	3000	13.4	f-1/16	2	4-1/2	2	10-1/4	262
CR-1 – Tandem Cylinder																						
SZEA6000	N/A	N/A	5/32	4	3/16	5	N/A	N/A	N/A	N/A	N/A	N/A	9/16	14	6000	26.7	f-1/16	2	4-1/2	2	11-1/4	287
SZEA6015	3/16	5	5/32	4	3/16	5	1-1/2	38	1-1/4	32	11/16	78	9/16	14	6000	26.7	f-1/16	2	5-1/2	2.5	14	356
CR-1 – Triple Cylinder																						
SZEA8000	N/A	N/A	5/32	4	1/4	6	N/A	N/A	N/A	N/A	N/A	N/A	9/16	14	9000	40.1	f-1/16	2	7-1/2	3.4	16	406
SZEA8015	3/16	5	3/16	5	1/4	6	1-1/2	38	1-1/4	32	11/16	78	9/16	14	9000	40.1	f-1/16	2	8-1/2	3.9	18-3/4	476

Due to a variety of jobs and applications, Squeeze Riveters are not supplied with rivet sets. Please contact Sioux Tools, Inc. or your local distributor for rivet set information.

General:

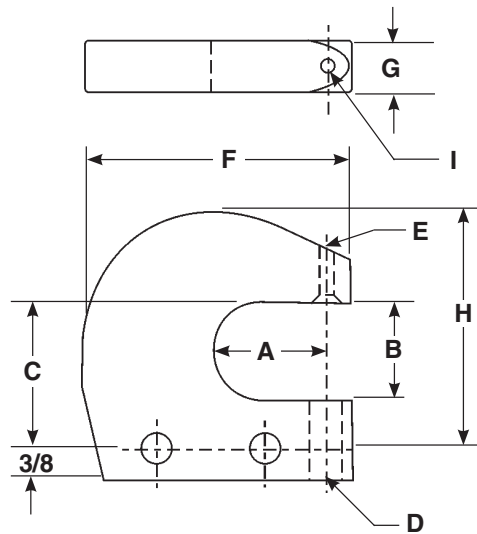
Air Inlet Size: 1/4" NPT • Recommended Hose Size: 3/8" (10 mm) • Performance rated @ 90 psig (6.2 bar) air pressure

Standard Equipment:

Parts List • Safety and Instruction Manual • Safety throttle action

C-Yoke Nomenclature

- A** Reach
- B** Gap
- C** Height from yoke hole to center to top of yoke gap
- D** Bottom set hole diameter CR-1 or CR-2
- E** Top set hole diameter CR-1 or CR-2
- F** Width of yoke set hole center to top of yoke
- G** Thickness of yoke
- H** Height of yoke from bolt hole center to top of yoke
- I** Radius from set hole center



A		B		C		D		E		F		G		H		I	
in	mm	in	mm	in	mm	in	mm	in	mm	in	mm	in	mm	in	mm	in	mm
1-1/2	38	1-1/4	32	1-7/8	48	3/8	10	3/16	5	2-7/8	73	9/16	14	3	76	1/4	6
						7/16	11	1/4	6								



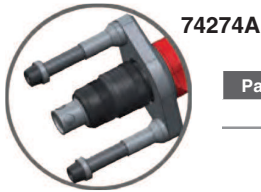
SAFETY PRECAUTION: Read and follow all safety and operating instructions.
WARNING: Face & eye protection must be worn while operating power tools, per ANSI B186.1

Rivet Shaver Skirts



Part Number	Cutter Diameter	
	in	mm
2925-5	5/16	8
2925-6	3/8	10
2925-7	7/16	11
2925-8B	1/2	13
2925-9	9/16	14
2925-9W	9/16	14
2925-10	5/8	16

Stabilizer



Part Number	For Use On
7427A	SRS6P21 series

Collets



Collet Type	Part Number	Capacity	For Use On
Sioux	44440	1/4"	1971HP series
Sioux	66038	6 mm	1971HP series
100 Series	21126B	1/4"	1980A, 1982A, RT1985
100 Series	21125	3/8"	1980, RT1982, 1985A
100 Series	21124	1/2"	1981F, RT1981, RT1983, 1985-1/2



Collet Type	Collets
21095	#10 - 5/16"
21139	1/4" - 1/2"

Support Handle

Part No. 2355B



Signature Series Support Handle

Part No. SPSDR-14A



Collet Chuck Assemblies

Sioux Style Collets



Collet Chuck Assemblies	Sioux Collet Chuck				
	1/8"	3 mm	3/16"	1/4"	6 mm
Chuck Assembly	43342	68617	43341	43340	68618
Collet Body	21096	21096	21096	21096	21096
Collet Insert	44522	66037	44523	44440	66038
Collet Nose	N/A	N/A	N/A	N/A	N/A
Collet Nut	21097	21097	21097	21097	21097

200 Series Heavy Duty Double Tapered Collet



Part Number	Description
74071	Collet Nut
74072	Collet (1/8")
74073	Collet (3/16")
74074	Collet (1/4")
77400	Collet (1/4") Heavy Duty
68030	Collet (3/8")
74075	Collet (3 mm)
74076	Collet (6 mm)
68056	Collet (8 mm)
77057	Collet Body SDG Series
74070	Collet Body (1 hp)

300 Series Heavy Duty Double Tapered Collet

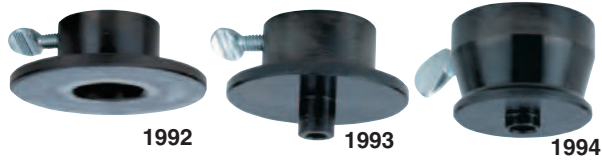


Part Number	Description
74128	Collet Nut
74124	Collet (3/32")
74121	Collet (1/8")
74120	Collet (1/4")
74122	Collet (3 mm)
74123	Collet (6 mm)
77505	Collet Body SAS Series
74125	Collet Body SDG Series



SAFETY PRECAUTION: Read and follow all safety and operating instructions.
WARNING: Face & eye protection must be worn while operating power tools, per ANSI B186.1

Router Base Assembly



Part Number	Used On
1992	SRT10S25BB
1993	1971HP / SRT10S25BB
1994	1971HPC / SRT10S25BB

Laminate Base Trimmer

Part No. 1991

For use on SRT10S25LT series routers



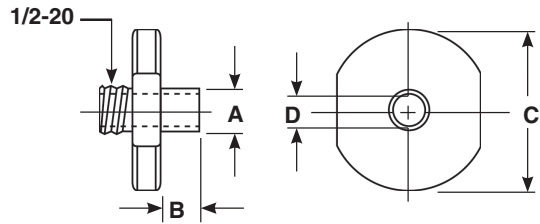
Reciprocating Saw Blades

Packaged in Cartons of 5



Part Number	Length		Teeth Per Inch
	in	mm	
For Use on Model 1300			
1815	6	150	10
1810	6	150	14
1813	4	100	14
1811	6	150	18
1812	4	100	18
1814	6	150	24
1816	6	150	6
1819	12	300	6

Template Guide Chart



Part Number	Dimensions in Inches			
	A Pilot OD	B Pilot Length	C Flange OD	D Pilot ID
68613-12	3/8	1/4	3/4	9/32
68613-14	3/8	3/8	3/4	9/32
68613-16	3/8	1/2	3/4	9/32
68613-22	3/8	1/8	1-1/2	9/32
68613-24	3/8	1/4	1-1/2	9/32
68613-26	3/8	3/8	1-1/2	9/32
68613-40	7/16	1/4	3/4	21/64
68613-42	7/16	3/8	3/4	21/64
68613-44	7/16	1/2	1-1/2	21/64
68613-48	7/16	1/4	1-1/2	21/64
68613-50	7/16	3/8	1-1/2	21/64
68613-52	7/16	1/2	1-1/2	21/64
68613-62	1/2	1/4	1-1/2	11/32
68613-64	1/2	3/8	1-1/2	11/32
68613-66	1/2	1/2	1-1/2	11/32
68613-72	1/2	1/2	2-1/2	11/32



SAFETY PRECAUTION: Read and follow all safety and operating instructions.
WARNING: Face & eye protection must be worn while operating power tools, per ANSI B186.1

SIOUX TOOLS INDUSTRIAL CATALOG | CONVERSION CHART

INCH			MILLIMETERS		MILLIMETERS		INCHES		FOOT POUNDS	NEWTON METERS	FOOT POUNDS	NEWTON METERS
1/64	.0156	0.397	26	1.0236	94	3.7008						
1/32	.0312	0.794	27	1.0630	95	3.7402			18	24.4	85	115.2
	.0394	1.000	28	1.1024	96	3.7795			19	25.8	86	116.6
3/64	.0469	1.191	29	1.1417	97	3.8189			20	27.1	87	117.9
1/16	.0625	1.587	30	1.1811	98	3.8583			21	28.4	88	119.3
5/64	.0781	1.984	31	1.2205	99	3.8976			22	29.8	89	120.7
	.0787	2.000	32	1.2598	100	3.9370			23	31.2	90	122.0
3/32	.0937	2.381	33	1.2992	110	4.3307			24	32.5	91	123.4
7/64	.1094	2.778	34	1.3386	120	4.7244			25	33.9	92	124.7
	.1181	3.000	35	1.3780	130	5.1181			26	35.3	93	126.0
1/8	.1250	3.175	36	1.4173	140	5.5118			27	36.6	94	127.4
9/64	.1406	3.572	37	1.4567	150	5.9055			28	38.0	95	128.8
5/32	.1562	3.969	38	1.4961	160	6.2992			29	39.3	96	130.2
	.1575	4.000	39	1.5354	200	7.8740			30	40.7	97	131.5
11/64	.1719	4.366	40	1.5748	300	11.8110			31	42.0	98	132.9
3/16	.1875	4.762	41	1.6142	400	15.7480			32	43.4	99	134.2
	.1968	5.000	42	1.6535	500	19.6850			33	44.7	100	135.6
13/64	.2031	5.159	43	1.6929	600	23.6220			34	46.1	110	149.0
7/32	.2187	5.556	44	1.7323	700	27.5591			35	47.5	115	156.0
15/64	.2344	5.953	45	1.7717	800	31.4961			36	48.8	120	163.0
	.2362	6.000	46	1.8110	900	35.4331			37	50.2	125	170.0
1/4	.2500	6.350	47	1.8504	1000	39.3701			38	51.5	130	176.0
17/64	.2656	6.747	48	1.8898					39	52.9	135	183.0
	.2756	7.000	49	1.9291					40	54.2	140	190.0
9/32	.2812	7.144	50	1.9685					41	55.6	145	197.0
19/64	.2969	7.541	51	2.0079					42	56.9	150	203.0
5/16	.3125	7.937	52	2.0472					43	58.3	155	210.0
	.3150	8.000	53	2.0866					44	59.7	160	217.0
21/64	.3281	8.334	54	2.1260					45	61.0	165	224.0
11/32	.3437	8.731	55	2.1654					46	62.4	170	231.0
	.3543	9.000	56	2.2047					47	63.7	175	237.0
23/64	.3594	9.128	57	2.2441					48	65.0	180	244.0
3/8	.3750	9.525	58	2.2835					49	66.4	185	251.0
25/64	.3906	9.922	59	2.3228					50	67.8	190	258.0
	.3937	10.000	60	2.3622					51	69.1	195	264.0
13/32	.4062	10.319	61	2.4016					52	70.5	200	271.0
27/64	.4219	10.716	62	2.4409					53	71.9	225	305.0
	.4331	11.000	63	2.4803					54	73.2	250	339.0
7/16	.4375	11.112	64	2.5197					55	74.6	275	373.0
29/64	.4531	11.509	65	2.5591					56	75.9	300	407.0
15/32	.4687	11.906	66	2.5984					57	77.3	350	474.0
	.4724	12.000	67	2.6378					58	78.6	400	542.0
31/64	.4844	12.303	68	2.6772					59	80.0		
1/2	.5000	12.700	69	2.7165					60	81.3	HEX SOCKET CONVERSIONS 10mm=0.394" 11mm=0.433" 12mm=0.472" 13mm=0.512" 14mm=0.551" 15mm=0.591" 16mm=0.630" 17mm=0.669" 18mm=0.704" 19mm=0.748" 20mm=0.787" 21mm=0.827"	
	.5118	13.000	70	2.7559					61	82.7		
33/64	.5156	13.097	71	2.7953					62	84.0		
17/32	.5312	13.494	72	2.8346					63	85.4		
35/64	.5469	13.891	73	2.8740					64	86.8		
	.5512	14.000	74	2.9134					65	88.1		
9/16	.5625	14.287	75	2.9528					66	89.5		
37/64	.5781	14.684	76	2.9921					67	90.8		
	.5906	15.000	77	3.0315					68	92.2		
19/32	.5937	15.081	78	3.0709					69	93.5		
39/64	.6094	15.478	79	3.1102					70	94.9		
5/8	.6250	15.875	80	3.1496					71	96.3		
	.6299	16.000	81	3.1890					72	97.6		
41/64	.6406	16.272	82	3.2283					73	99.0		
21/32	.6562	16.669	83	3.2677					74	100.3		
	.6693	17.000	84	3.3071					75	101.7		
43/64	.6719	17.066	85	3.3465					76	103.0		
11/16	.6875	17.462	86	3.3858					77	104.4		
45/64	.7031	17.859	87	3.4252					78	105.8		
	.7087	18.000	88	3.4646					79	107.1		
23/32	.7187	18.256	89	3.5039					80	108.5		
47/64	.7344	18.653	90	3.5433					81	109.8		
	.7480	19.000	91	3.5827					82	111.2		
3/4	.7500	19.050	92	3.6220					83	112.5		
49/64	.7656	19.447	93	3.6614					84	113.9		
25/32	.7812	19.844										
	.7874	20.000										
51/64	.7969	20.241										
13/16	.8125	20.637										
	.8268	21.000										
53/64	.8281	21.034										
27/32	.8437	21.431										
55/64	.8594	21.828										
	.8661	22.000										
7/8	.8750	22.225										
57/64	.8906	22.622										
	.9055	23.000										
29/32	.9062	23.019										
59/64	.9219	23.416										
15/16	.9375	23.812										
	.9449	24.000										
61/64	.9531	24.209										
31/32	.9687	24.606										
	.9843	25.000										
63/64	.9844	25.003										
	1.0000	25.400										

Inch Lbs. x 0.113=Nm; Nm x 8.849=Inch Lbs.; Ft. Lbs x 1.356=Nm; Nm x 0.737=Ft. Lbs.